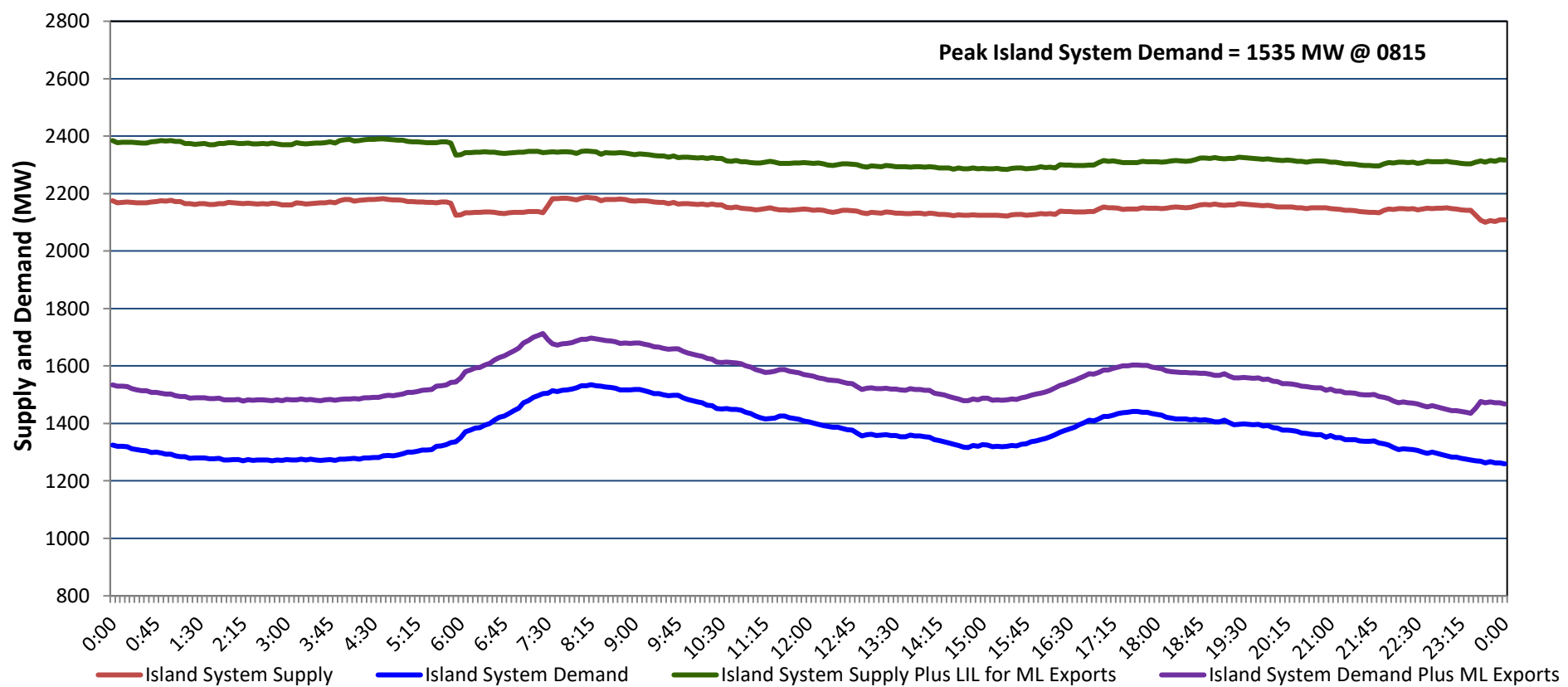


Newfoundland Labrador Hydro (NLH) Supply and Demand Status Report Filed Monday, January 27, 2025

Section 1 Island Interconnected System - Supply, Demand & Exports Actual 24 Hour System Performance For Friday, January 24, 2025



Island Supply Notes For January 24, 2025

- A** As of 0000 hours, October 20, 2024, Holyrood Unit 1 unavailable due to forced extension to planned outage (170 MW).
B As of 0806 hours, January 23, 2025, Holyrood Unit 2 available at 150 MW due to forced derating (170 MW).
C At 0554 hours, January 24, 2025, Granite Canal Unit unavailable due to forced outage (40 MW).

Section 2 Island Interconnected System - Supply, Demand & Outlook

Sat, Jan 25, 2025	Island System Outlook ²	Seven-Day Forecast	Island System Daily Peak Demand (MW)	
			Forecast ⁸	Adjusted ⁶
Island System Supply: ⁴ NLH Island Generation: ^{3,7} NLH Island Power Purchases: ⁵ NP and CBPP Owned Generation: LIL/ML Net Imports to Island: ⁹	2,160 MW 1,465 MW 130 MW 215 MW 350 MW	Saturday, January 25, 2025	1,490	1,383
		Sunday, January 26, 2025	1,365	1,259
		Monday, January 27, 2025	1,420	1,314
		Tuesday, January 28, 2025	1,340	1,235
		Wednesday, January 29, 2025	1,435	1,328
		Thursday, January 30, 2025	1,390	1,284
		Friday, January 31, 2025	1,535	1,427
7-Day Island Peak Demand Forecast:	1,535 MW			

Island Supply Notes For January 25, 2025

- Notes:
1. Generation outages for running and corrective maintenance are included. These are not unusual for power system operations. They generally do not impact customer supply. Hydro schedules outages to system equipment whenever possible to coincide with periods when customer demands are low and sufficient supply reserves are available. However, from time to time equipment outages are necessary and reserves may be impacted.
 2. As of 0800 Hours.
 3. Gross continuous unit output.
 4. Gross output from all Island sources (including Note 3).
 5. NLH Island Power Purchases include: ML Imports, Exploits Generation, Rattle Brook, Star Lake, Wind Generation and capacity assistance (when applicable).
 6. Adjusted for interruptible load and the impact of voltage reduction when applicable.
 7. Due to limitations inherent in the design of combustion turbines, the output of combustion turbines may be reduced in the event that ambient temperatures exceed the threshold required for full rated output. This threshold is dependent on the design of each turbine.
 8. Does not include ML Exports.
 9. LIL Import sunk in the Island System. Actual LIL flows will be restricted by various system conditions including, but not limited to, Island Load, ML Exports and Avalon Unit status.

Section 3 Island Peak Demand and Exports Information Previous Day Actual Peak and Current Day Forecast Peak

Fri, Jan 24, 2025	Island Peak Demand ¹⁰	8:15	1,535 MW
	Exports at Peak		162 MW
	LIL Net Imports to Island		8,398 MWh
Sat, Jan 25, 2025	Forecast Island Peak Demand		1,490 MW

- Notes: 10. Island Demand is supplied by NLH generation and purchases, LIL Imports plus generation owned and operated by Newfoundland Power and Corner Brook Pulp & Paper (Deer Lake Power, DLP).